

***IMPLAS* SDN BHD**

**BIO FILTER MEDIA**



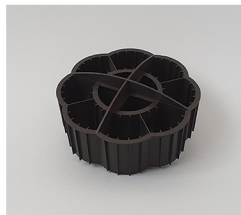
BIO FILTER MEDIA

# BIO FILTER MEDIA

## Overview

Made of UV stabilised Polypropylene (PP), Bio Filter Media is ideal for shallow trickling filter systems and submerged bed applications. It is non-toxic to microorganisms, chemically resistant and highly immune to UV degradation and disintegration over time.

Bio Filter Media is excellent for Biological Oxygen Demand (BOD) reduction or nitrification. This is promoted by its structure which presents a number of mixing points for air and water. Due to the high percentage of protected surface area for microorganisms to attach to, Bio Filter Media increases the overall biomass concentration while reducing the tank volume required for wastewater treatment. In addition, Bio Filter Media has low resistance with its large openings, allowing waste water to flow freely through the media, which encourages a healthy and thin biofilm.



## Common Applications

Biological treatment, wastewater treatment, air treatment, etc.

## Features

- High resistance to corrosion and rust proof
- Chemically resistant
- High strength  
*Suitable for deep beds*
- Easy and low cost install

## Performance Data

Model	RBM43
Size (mm)	H 53.4 x Ø 97.04
Material of Construction	Polypropylene (PP)
Colour	Black ■ *UV stabilised with addition of Carbon Black Natural (Translucent white) □
Type of Media	Fluidized Bio-media
Structure	Self-supporting cylindrical shaped with internal ribs and concrete circular
Unit / m <sup>3</sup>	1900
Surface Area/Unit Bulk Volume (m <sup>2</sup> /m <sup>3</sup> )	125
Bulk Density (kg/m <sup>3</sup> )	82
Specific Gravity (g/cm <sup>3</sup> )	0.905 - 1.000
Voidage	>90%
Melting Temperature (°C)	164
Flammability	HB
Comprehensive Strength (psi)	7000
Water Absorption, 24 hrs (%)	<0.01

\*Data given is for reference only. Specifications may vary depending on process parameters.

Visit our website



TEL: (+6)07-5115739 MOBILE / WHATSAPP: (+6)016-7783515

FAX: (+6)07-5114189 EMAIL: sales@implasenv.com

ADDRESS: 25, Jalan Perniagaan Setia 1/4, Taman Perniagaan Setia, 81100, Johor Bahru, Johor, Malaysia.

WEBSITE: www.implasenv.com

**IMPLAS** SDN BHD (680283-D)